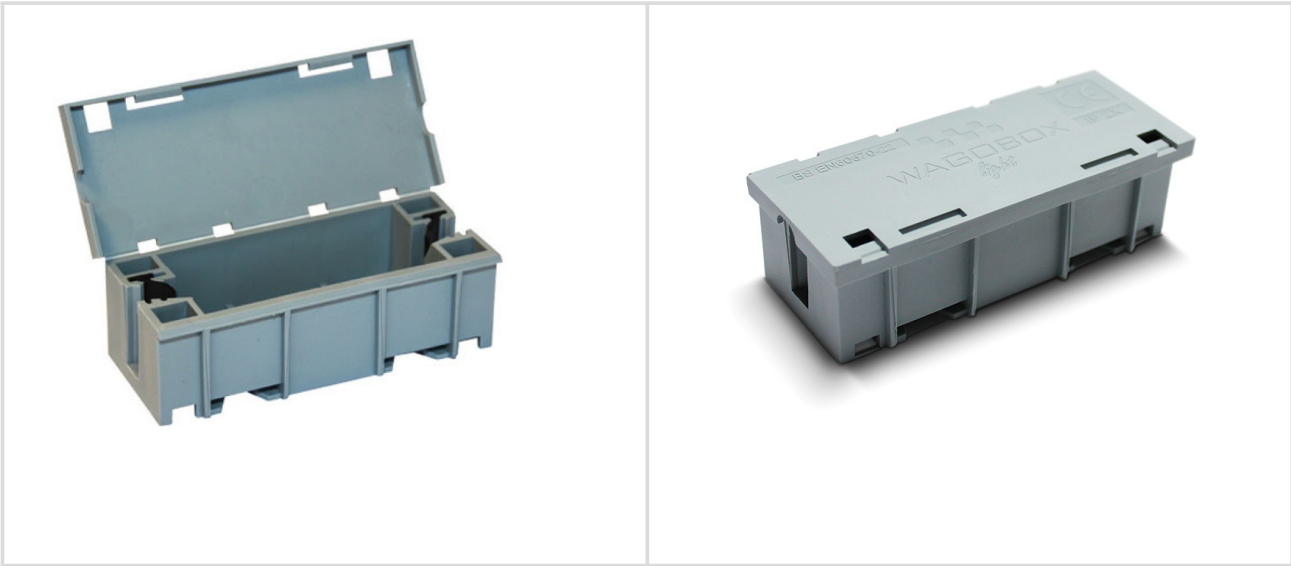


Data sheet | Part number: WBL-001-G

WAGOBX Light; Grey; Multi-Purpose Enclosure; Junction Box; for WAGO 221-2411 Inline Connectors and 224, 260 and 294 series terminal blocks; maximum 4 mm² connectors; for multicore cables; configurable to BS5733 - Maintenance Free (MF); Manufactured in the UK



Features & Benefits

- Simple, quick and safe to use
- BS 5733-MF (Maintenance-Free) for use in inaccessible areas
- Adjustable cable restraint
- Screw-free design
- Complies with BS EN 60670-22, BS 7671 and configurable to BS 5733-MF

Electrical data	
Ratings per IEC/EN	
Ratings (note): Rated current up to 32 A; Nominal voltage 450 V; Rated impulse voltage 4 kV	

Physical data	
Width	126 mm / 4.961 ins
Height	55 mm / 2.165 ins
Depth	115 mm / 4.528 inches
Weight	7.8 g

Material data	
Note (material data)	Visit <a href="http://www.connexbox.com">www.connexbox.com</a> for material specifications information
Material	Polypropylene, Fire Retardant (FR), Colour Master Batch
Colour	Grey
Fire load	0 MJ
Flammability Rating	BS EN 60670-22 Glow-wire, Ignition Resistant UL94 V2

Commercial data	
Country of Origin	United Kingdom
ETIM 8.0	EC001170
PU (SPU)	1 Piece
GTIN	986239960000

Mechanical data	
Protection type	IP2X
Mounting type	For surface mounting in all types of installation except into concrete
Mounting accessories	Wagobox Mounting Button (WMB-001-G)
Additional accessories	Replacement Grippers (WBX-GRP-B)
Cable sizes	The cable clamps have the ability to hold up to 12 cables that have an overall diameter ranging from 3 mm to 15 mm
Recommended connectors	WAGO 221-6XX, 222 and 773 series connectors; Can support conductor sizes from 0.08 mm² to 6.0 mm²
Max. supported individual conductor connections	If twelve 3-core cables of 1 mm² are being installed, the maximum number of connections is 36; The maximum number of 6 mm² connections is 12 based on six 3-core cables being used.

Environmental Product Compliance	
RoHS Compliance Status	Compliant. No Exemption.

Approvals and Certificates		
Approval	Standard	Certificate
ROHS, CE	BS EN60670-22 2006 (Part 22: Particular requirements for connecting boxes and enclosures) in conjunction with BS EN60670-1:2005 + Amendment 1:2013 (Boxes and enclosures for electrical accessories for household and similar fixed electrical installations - Part 22: Particular requirements for connecting boxes and enclosures.	IEC 60670-22 - SGS Ref: ELS262731/1/C/AN/19

Subject to changes. Please also observe the further product/materials documentation available at [www.connexbox.com](http://www.connexbox.com)